

TKL GROUP

IATF 16949:2016

Technology Knowhow Leadership



HEAVY DUTY COMPONENTS

2023

TKL GROUP

DISCLAIMER: All brand names or trademarks are registered trademarks of their respective owners.

All information in this catalog is provided to our best ability.

We do not assume any responsibility for errors or incorrect applications, part numbers, parts diagrams, part pictures, OEM numbers.

All OEM numbers are used here for comparison purposes only.

CONTENTS

BRAKE CHAMBER



| | |
|----------------------------|----|
| Spring Brake Chamber..... | 11 |
| Single Brake Chambers..... | 13 |
| Disc Brake Chamber..... | 13 |

GOVERNOR



| | |
|---------------------------|----|
| Alcohol Evaporator..... | 13 |
| D-2 Governor..... | 14 |
| Unloader Valve Wabco..... | 14 |

AIR DRYER



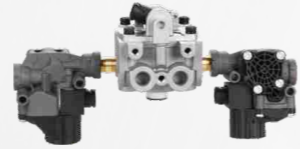
| | |
|---|----|
| AD-HF Air Dryer | 16 |
| AD-9SI Air Dryer and Replacement Parts..... | 16 |
| AD-9 Air Dryer..... | 17 |
| AD-IP Air Dryer..... | 19 |
| AD-IS Air Dryer..... | 21 |
| System Saver Air Dryer..... | 23 |
| ADSP Air Dryer..... | 25 |
| SKF Turbo-2000 Air Dryer..... | 26 |
| Meritor-Wabco SS-1200 Plus Air Dryer..... | 26 |
| Haldex DRYest Dryer..... | 27 |
| Haldex PURest Air Dryer..... | 28 |
| Haldex ModulAir Air Dryer..... | 28 |
| Wabco Air Dryer..... | 28 |
| Knorr-Bremse Air Dryer..... | 28 |
| Duradrain Valve..... | 28 |

FAN CLUTCH



| | |
|------------------|----|
| Fan Clutch | 29 |
|------------------|----|

VALVE



| | |
|--|----|
| MV-3 Control Valve..... | 31 |
| MIDLAND Control Valve..... | 35 |
| PP-DC Control Valve..... | 36 |
| PP-1 Control Valve..... | 37 |
| PP-3 Control Valve..... | 37 |
| Push & Pull Valve..... | 38 |
| TW-1 Control Valve..... | 38 |
| Sealco Push & Pull Valve..... | 39 |
| Air Seat Control Valves..... | 39 |
| Position Valve..... | 39 |
| Williams Control Valve..... | 39 |
| Air Horn Valve..... | 40 |
| 3 Way Pilot Valve..... | 40 |
| Auxiliary Lift Axle Valve..... | 40 |
| Air Shift Valve..... | 41 |
| Slave Valve..... | 42 |
| Transmission Range Valve..... | 42 |
| Dual Acting Cylinder..... | 42 |
| E-3,E-6 Brake Valve..... | 43 |
| E-7,E-8 Brake Valve..... | 44 |
| Manual Drain Valve..... | 44 |
| Sealco Relay Valve..... | 45 |
| RG-2,R-6,R-7,R-8 Relay Valve..... | 46 |
| R-12,R-12H,R-12H&V,R-12P Relay Valv..... | 47 |
| R-14H,R-14H&V,BP-R1 Relay Valve..... | 49 |
| ATR-6 Traction Relay Valve..... | 50 |
| ABS ECU+Modulator..... | 51 |
| ABS Axle Package..... | 51 |
| Service Replacement Valve..... | 52 |
| ABS Sensor..... | 53 |
| RE-6 Relay Emergency Valve..... | 55 |
| A1000 Relay Emergency Valve..... | 55 |
| A1000 Relay Emergency Valve Cartridge..... | 55 |
| Relay Emergency Valve..... | 56 |
| FF-2 Full Function Valve..... | 56 |
| Williams Relay Valve..... | 56 |
| 2 Line Tractor Protection Valve..... | 57 |
| TP-3DC Tractor Protection Valve..... | 58 |
| TP-5 Tractor Protection Valve..... | 59 |
| Air Manifold..... | 59 |
| Quick Release Valve..... | 61 |
| SL-4 Stop Light Switch..... | 63 |
| Stop Light Switch..... | 63 |
| Solenoid Control Valve..... | 63 |
| Spring Brake Valve..... | 65 |
| Spring Brake Control Valve..... | 66 |
| Pressure Protection Valve..... | 68 |
| Safety Valve..... | 69 |

VALVE



| | |
|---------------------------|----|
| Hand Control Valve..... | 71 |
| TC-2 Brake Valve..... | 71 |
| Height Control Valve..... | 71 |
| Adjustable Linkage..... | 72 |
| Exchange Connectors..... | 83 |
| Connectors..... | 83 |
| Double Check Valve..... | 83 |
| Single Check Valve..... | 84 |
| Air Brake Fitting..... | 85 |

AIR CONNECTOR



| | |
|------------------------------|----|
| Gland Hand | 87 |
| Gland Hand Rubber..... | 87 |
| Gland Grip..... | 87 |
| Air Hose With Gun..... | 88 |
| Air Hose..... | 88 |
| Mess Nylon Tube..... | 88 |
| Air Lines & Accessories..... | 89 |

ELECTRIC CONNECTOR



| | |
|---|----|
| Air Brake Hose..... | 90 |
| Air Brake Hose Assembly..... | 90 |
| Electric Plug..... | 91 |
| Electric Socket..... | 91 |
| Nosebox..... | 91 |
| Black Coiled Electrical Cable..... | 91 |
| ABS Green Electrical Cable..... | 92 |
| 3-in-1 Electrical & Air Assemblies..... | 92 |
| Normal Black Wireless..... | 92 |
| ABS Green Wireless..... | 92 |

HUB COVER



| | |
|----------------|----|
| Hub Cover..... | 93 |
|----------------|----|

SLACK ADJUSTER



| | |
|-------------------------------|----|
| Automatic Slack Adjuster..... | 95 |
| Manual Slack Adjuster..... | 97 |

BRAKE SHOE



| | |
|-----------------|----|
| Brake Shoe..... | 97 |
|-----------------|----|

BRAKE DRUM



| | |
|-----------------|-----|
| Brake Drum..... | 100 |
| Roller..... | 100 |

BRAKE REPAIR KIT



| | |
|-----------------------------|-----|
| Brake Shoe Repair Kits..... | 101 |
|-----------------------------|-----|

BEARING



| | |
|--------------|-----|
| Bearing..... | 106 |
|--------------|-----|

AIR SPRING



| | |
|-----------------|-----|
| Air Spring..... | 108 |
|-----------------|-----|

CENTER SUPPORT BEARING



| | |
|-----------------------------|-----|
| Center Support Bearing..... | 114 |
|-----------------------------|-----|

TIE ROD END



| | |
|------------------|-----|
| Tie Rod End..... | 114 |
|------------------|-----|

UNIVERSAL JOINT



| | |
|----------------------|-----|
| Universal Joint..... | 115 |
| Hub Nut..... | 116 |
| King Pin Lock..... | 116 |
| Oil Seals..... | 117 |



TKL GROUP
AIR SYSTEM & ELECTRICAL COMPONENTS



COMPANY PROFILE

We take this opportunity to introduce ourselves TKL Group as one of the leading manufacturer of Heavy Duty Brake Parts. We are located in Zhejiang province, 2 hours from Shanghai and Ningbo port. TKL was set up in 1979, with our continuous and dedicated effort, today we are a professional manufacturer having IATF 16949:2016 Quality Management System of Auto Brake Parts for Semi-Trailer and Heavy Truck. We were judged as one of the TOP 100 Auto Spare Parts Manufacturers in CHINA and TOP 10 air brakes manufacturers in CHINA.

We have a built up area of 42000 M² manufacturing Units with more than 315 staff members including 60 highly professional technicians. It has got more than 180 sets of production and inspection equipments. Our manufacturing units are equipped with die casting machines, CNC Machines, punch machine, wash machine, vacuum sealing equipment, metal surface oxidation equipment, Assembly lines and test equipments for air proof, durability, high & low temperature, static characteristics and anti-vibration etc.



Phase II factory under construction

Our strength is TECHNOLOGY + KNOWHOW + LEADERSHIP and it makes us to continue our effort to add more items to our manufacturing program. We mainly produces Air Brake Chambers, Air Brake Valves, Air Dryers, Gland Hand, Slack Adjusters, Hub Caps, our manufactured items sells in domestic markets, we have exports to North and South America, Middle East, Africa, As a positive step to widen our global presence, we have started our Colombia office in 2012, Middle East Office in 2013. TILL NOW YOU WILL FIND TKL PRODUCTS MORE THAN 43 COUNTRIES.

We have got an experienced, consistent & qualitative hard working export team, which is highly qualified and specialized in this field of market and have been carrying out their job efficiently so as to achieve and satisfy the requirement of our customers and also ensuring them our best service always.



TKL GROUP

PRODUCTION EQUIPMENT

TKL is always looking at the latest manufacturing technology and processes in order to continuously improve productivity and quality. Dedicated to quality TKL makes no compromise when delivering new products to a customer, and ensures all products delivered match the customer's specification.



CNC MACHINING CENTER



MULTI-PROCESS AUTOMATIC STAMPING MACHINE



MULTI-PROCESS AUTOMATIC STAMPING MACHINE



TRUSS ROBOT



VACUUM PLUGGING MACHINE



AUTOMATIC TAPPING MACHINE



CNC MACHINE



DIE-CASTING MACHINE



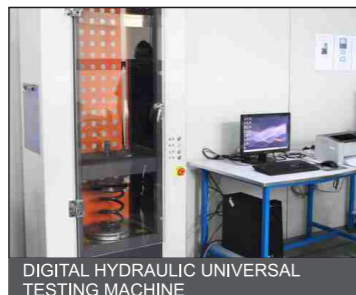
TKL GROUP

LABORATORY EQUIPMENT

- ★ SAE standard test equipment.
- ★ Each component is inspected before assemble.



PERFORMANCE TEST MACHINE



DIGITAL HYDRAULIC UNIVERSAL TESTING MACHINE



LIFE TEST MACHINE



SALT SPRAY TEST MACHINE



UV TESTING MACHINE



MEASURING PROJECTOR



SPRING LIFE TEST MACHINE



SPRING DYNAMOMETER MACHINE



PROGRAMMABLE TEMPERATURE & HUMIDITY CHAMBER



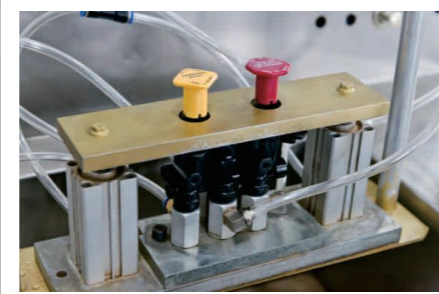
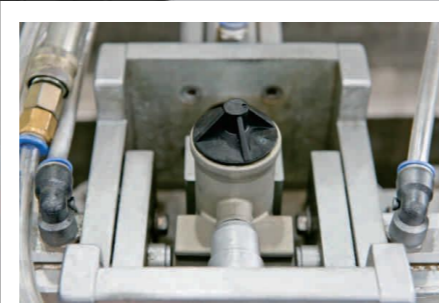
SPRING FATIGUE TESTING MACHINE



TKL GROUP

TEST EQUIPMENT

- ★ 1 YEAR warranty.
- ★ 100% tested by our quality control department.



- ★ Each component is inspected before assemble.
- ★ SAE standard test equipment.



CERTIFICATE OF PATENT

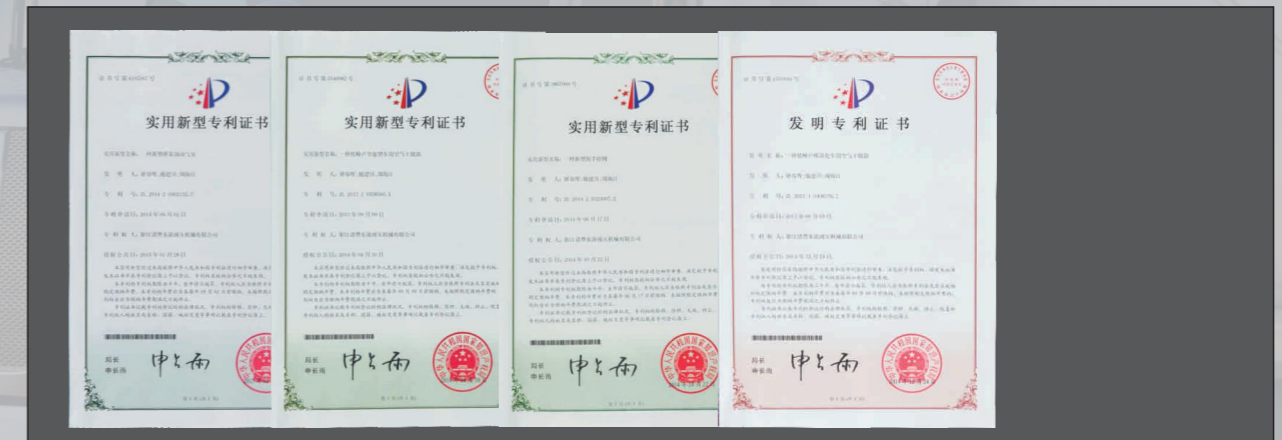
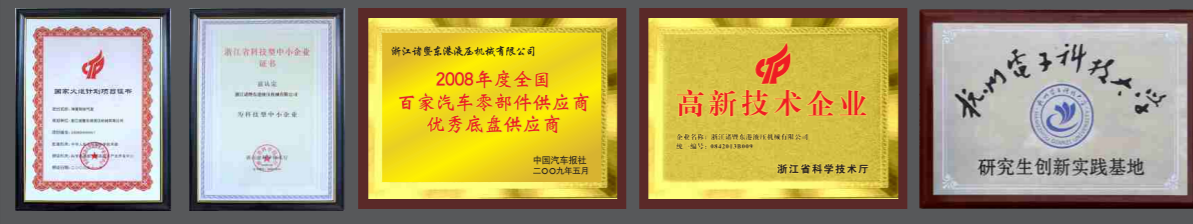
CERTIFICATE OF IATF 16949:2016 REGISTRATION NO:08129/0



CERTIFICATE OF ENVIRONMENTAL REGISTRATION NO: 0071718E51186R0S



CERTIFICATE OF HONOUR





www.accuplus.com.cn

IATF 16949:2016

CHOOSE TKL , CHOOSE THE ROAD TO SUCCESS!

PRODUCTION BASE
ZHUJI ,ZHEJIANG,CHINA.
P.C:311811
TEL:0086-575-87438932
FAX:0086-575-87438032
EMAIL:tuchunhui@163.com

OVERSEA BRANCHES
WTP AUTO PARTS TRADING LLC(UAE)
SHOP NO-10,MOHD BIN ALI AL QAIZI AL MAKTOUM
HOSPITAL ROAD-NEAR ROYAL SQUARE HOTEL
PO BOX:34563 DUBAI,UAE.
TEL:009714-2281066
FAX:009714-2283763
EMAIL:sales1@wtpauto.com

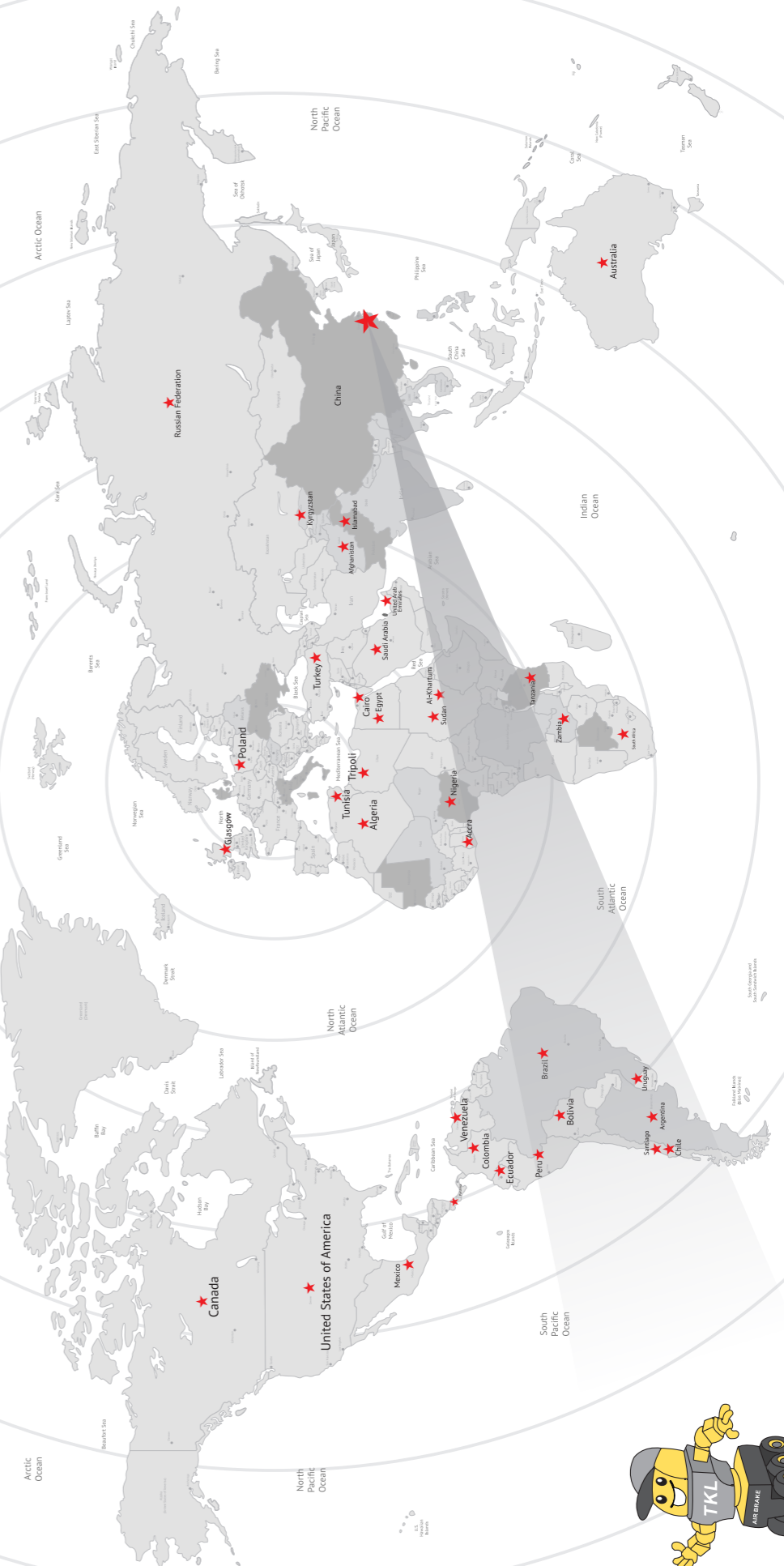
MARKETING AUTOPARTS
Cra 13 # 29 - 21 Mz. 1 Of. 242
PBX: (571) 2853938
EMAIL: tklgrouperport@gmail.com
Bogotá - Colombia

BTV AUTO PARTS (HONGKONG)
RM 9 24/F SUNWISE IND BUILDING NO.16-26
WANG WO TSA I STREET TSUU WAN NT,HONGKONG.
TEL:00852-98107660
FAX:00852-24315391
EMAIL:btvautoparts@gmail.com

www.accuplus.com.cn

SALES NETWORK

WE ARE LOOKING FOR THE TKL AGENTS
SOLE AGENT ALL OVER THE WORLD



AIR SYSTEM & ELECTRICAL COMPONENTS

